

## LISTING SUMMARY

**\$100,000 (LP)**

**6042 Longford Rd, Huber Heights, OH 45424** **Active**

**Beds: 3 Baths: 2 (2 0) (FH) Sq Ft: 1080 Lot Sz: 11,433 Sq Ft**

**Price/SqFt: \$92.59**

**Area: Huber Yr: 1961**

### Remarks

Another one of the Housing Source NSP homes available! Completely renovated from the framing out with a hyper focus on energy efficiency. Three beautiful bedrooms with reconfigured closet space, a gorgeous master bedroom suite with a private bath and a dedicated laundry room. The kitchen will stop your heart with all new GE Appliances. The Housing Source provides a FIVE year home warranty with each sale, 10% of the purchase price in down payment assistance and a home manual including every inspection tag, warranty and spec for EVERYTHING in the house. You'll love the view from the back porch and enjoy the HUGE fenced in yard. Right down the street from the school, this family home is waiting for YOU!

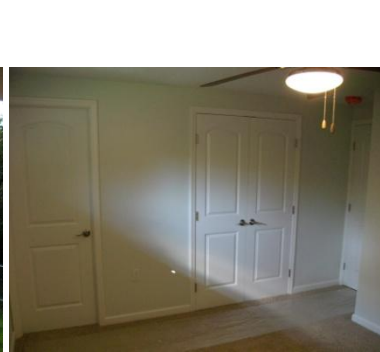


Adam Blake, Housing Development Manager  
CountyCorp [ablake@countycorp.com](mailto:ablake@countycorp.com)

<b>Office</b>	CountyCorp		
<b>Showing Phone Number</b>	(937) 531-7048, (937) 531-7046		
<b>Area</b>	Huber Heights-S		
<b>Subdivision</b>			
<b>Municipality</b>	City of Huber Heights		
<b>County</b>	Montgomery		
<b>Style</b>	Ranch		
<b>Beds</b>	3	<b>Baths (FH)</b>	2(2)
<b>Year Built</b>	1961		
<b>Cross Street</b>	Brandt		
<b>Directions to Property</b>	Brand Pike to East on Longford		
<b>Semi Annual Taxes</b>	\$960.59		
<b>Assessments</b>	<b>APC \$21.50, Aquifer \$1.00, Lighting \$30.51</b>		
<b>Bus Distance to Trns</b>	Check with RTA		
<b>Lot Dimensions</b>	110x104		

## Room Dimensions

<b>Living Room</b>	17x12
<b>Kitchen</b>	17x13
<b>Bedroom 1</b>	12x11
<b>Bedroom 2</b>	10x11
<b>Bedroom 3</b>	10x10
<b>Bedroom 4</b>	
<b>Family Room</b>	
<b>Dining Room</b>	
<b>Laundry/Utility</b>	6x11
<b>Garage</b>	18x12
<b>Total Rooms</b>	6
<b>Baths Level 1</b>	2(2)
<b>Baths Level 2</b>	
<b>Age</b>	20+
<b>Levels</b>	1 Story
<b>Construction</b>	Brick/Frame
<b>Rooms</b>	Eat In Kitchen
<b>Garage</b>	1 car attached
<b>Basement</b>	Slab
<b>Heating System</b>	95% Efficient Natural Gas Forced Air
<b>Cooling</b>	Central
<b>Utilities</b>	220 Volt, City Water, Natural Gas, Storm Sewer
<b>Inside Features</b>	On Demand Gas Water Heater, Hard Wired Smoke Detectors, Alarm System
<b>Outside Features</b>	Porch, Fenced in Yard, Water Feature
<b>Zoning</b>	Residential
<b>Other</b>	Energy Efficient Home



*Information should be deemed reliable but not guaranteed, all representations are approximate, and individual verification is recommended.*